



continual growth...

The past few years has seen Rollins Electrical continue to expand it's already impressive project portfolio. This update highlights some of these projects and outlines our ever growing capabilities.

We can supply up to 75 on-site engineers, all experienced industrial and commercial electrical installation specialists.

Our dedicated team of electricians are 17th edition qualified, fully experienced in a vast array of industrial fields and regularly work in food processing environments, adhering to strict health and safety regulations.

As well as our vehicle fleet and engineers, our team consists of CDM supervisors, CAD designers, experienced and knowledgeable sales, support and admin staff, who together can deliver a bespoke solution to all your requirements, from the initial brief to arranging long term maintenance contracts.



#### vehicle & plant fleet...

We have an extensive fleet of vehicles and plant so can take care of all requirements. From vans to lorries, tippers, lifting equipment and heavy plant, we can handle any size project.

#### management team...

Our management team are vastly experienced in the industry and are always on hand to make sure every project runs smoothly, from start to finish.

David Rollins - Proprietor

Jordan Rollins - Technical Projects Manager

Daniel Sheales - Contracts Manager

Sunny Evans - Contract Supervisor





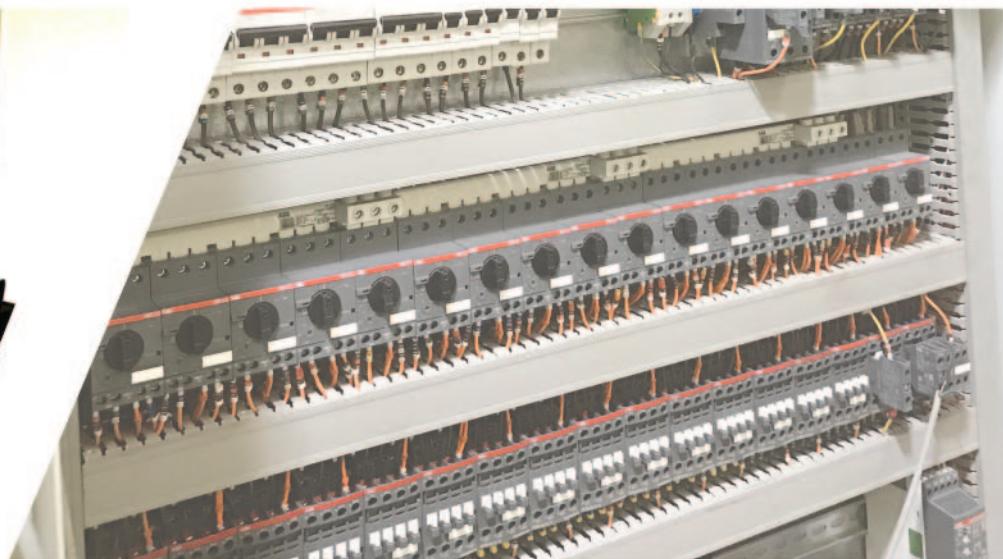
# industry specialists

global capabilities...

Rollins Electrical carry out work for small firms to worldwide multi nationals and recognises the need to tailor a quotation to the customers circumstances. We are justifiably proud of our project portfolio and listed below is a selection of the companies that are happy for us to announce that we have worked in partnership with them over the past few years. We pride ourselves on establishing long standing working relationships and are still working with many, whether on new projects or via our management and maintenance contracts.

custom built premises...

Our head office, workshop and storage facility is based in South Lincolnshire but we also have a Great Yarmouth office and have the capability to operate nationwide and abroad.





# premises relocation

- CLIENT: Vitec
- LOCATION:  
Bury St Edmunds, Suffolk
- PROJECT DURATION:  
July 2017 - April 2018
- PROJECT VALUE: £2m

*"In 2015 we contacted Rollins via a recommendation. Over a period of design meetings we felt Rollins fully understood our brief and had the full capabilities to fulfil our requirements. In late 2016 we awarded Rollins the full contract to refurbish the existing front building prior to carrying out an extensive fit out of our new purpose built factory, interlinking into the existing front building. Works on the existing building started in July 2017 and were handed over in January 2018 allowing us to start our move project.*

*Fit out works to the new factory building were delayed due to the build of main factory building and started in mid-October 2017. Rollins adjusted their programme to ensure we could start moving our production facilities during late February 2018 which has allowed us to complete our full move as planned by the end of April 2018."*



*" We would fully recommend Rollins to any business looking to relocate premises or considering an extensive refurbishment." Andy Fairs*





## services provided...

- Electrical Installations
- Lighting Installations
- Data Services
- Fire & Security Systems
- AV Installations
- Gas Installations
- Compressed Air Installations
- Plumbing Services
- Air Conditioning
- Steel Works
- Partitioning & Lay in Ceilings
- Glazing Installations
- Flooring
- Toilet Cubical Systems & Shower Rooms
- Plastering & Decoration Services
- Ground works & Fencing

### ● Electrical Installations

Heavy duty ladder containment systems for mains services to 15 points of distribution including a 400A Bus Bar system installed throughout main machine areas.

### ● Lighting Installations

A full LED installation throughout, consisting of High Bays, Low Bays, Flat Panel and strip lights on lighting trunking with Auto Daylight Controls.

### ● Data Services

Fibre back bone ring from main IT room to 3 points of data distribution over 800 Cat 6 data points installed with a Commercial floor box installation on the 1st floor mezzanine consisting under floor bus-bar and data wiring contained in basket trunking and copex to final floor box termination.

### ● Fire & Security Systems

L1 Addressable fire alarm system with Beams, Smoke & Heat detection. IP CCTV System, Paxton Access Control and Grade 2 Security Alarm.

### ● AV Installations

Within the regression suite over 50 HDMI points, 150 SDI points, as well as RS422 and Cat 6 Data installations.



## Conversion of open planned warehouse into a full operational factory within 5 months...

### ● Gas Installations

Commercial gas installations throughout the factory providing gas to main oven and high level gas heaters.

### ● Compressed Air Installations

Installation of an compressed air ring main with over 200 air outlets.

### ● Plumbing Services

Mains water installation throughout the factory, strip out of the old toilets in the existing building and installations of new systems including shower room.

### ● Air Conditioning & Ventilation

A total 18 Air Conditioning systems installed with 7 AHU's installed in main machinery areas.

### ● Steel Works

Steel supports installed into the existing building allowing for an open plan office environment, 6 meter U channels installed at 10 meters all allow for head defection in new dividing fire walls.

### ● Partitioning & Lay in Ceilings

Installation of 10 meter high, 1 hour rated fire walls over 100 meters long, lay in grid cleanings within smaller areas.

### ● Glazing Installations

Building of meeting rooms with full height glass walls.

### ● Toilet Cubical Systems & Shower Rooms

Complete fitout of gents, ladies and visitors toilets and creation of a shower room within the front building with new made to measure cubical systems.

### ● Flooring

Carpet tiles and vinyl flooring supplied and fitted through the front building and 1st floor mezzanine office area, safety flooring in toilets and shower rooms.

### ● Plastering & Decoration Services

Plastering of new and existing walls after demolition works to create open plan office area in front building. Full decoration throughout including a Green specialist video wall.

### ● Ground Works & Fencing

Construction of various concrete pads for large compressor house, machinery & generator base. Installation of external wooden fencing and internal metal mesh fencing.







# additional premises

- CLIENT: Annyalla
- LOCATION:  
Butterwick, Boston, Lincs
- PROJECT DURATION:  
June 2017 - on-going
- PROJECT VALUE: £3m

Having a good working relationship with the past site owners, after installation and project management for the previous 5 years, after recommendation, Rollins Electrical are now involved in the complete project management for a new client, Annyalla.

Working in partnership to deliver a comprehensive installation of a hatching facility, we are involved in all aspects of the project - from supplying labour, heavy plant (including cranes, forklifts and machinery), all installations, right down to supplying toilet rolls.

## hatching booths...

Rollins have provided up to 25 personnel to work under the supervision of HatchTech (Netherlands) to erect and fit out setter / hatching units.



## ducting works...

We provided an entire ducting system for heating and cooling up to 1200mm in diameter.





At the start of the project, Rollins was appointed **principal contractor** and selected an experienced CDM supervisor to over-see the site engineers as well as other contractors.

## services provided...

### Rollins directly responsible for:

- New HV Supply / Transformer
- Stand by Generator
- New Water Main
- New Mezzanine
- Fresh Air Ducting Systems
- Electrical Installations
- ASD Fire Alarm Installation
- Compressed Air Installation
- Full Hatchery Installation
- Data & CCTV Networks

### Sub-contractors responsible for:

- New Drainage System
- New Concrete Floors
- New Raising Floors
- New Roofing and Gutters



Sunny Evans has been responsible for supervising the full electrical and mechanical works. Rollins prides itself in allocating experienced management and supervisors suitable for customer needs.

## mezzanine construction...

Rollins provided mezzanines for AHU units complete with hand rail stairs supplied via a CE registered company with Rollins engineers installing on site.



## heavy plant supply ...

We supported the project from the supply of cleaning materials to a 300 tonne Crane to lift the boiler room and generators into position.



# recent project

- CLIENT: Baxter Health Care
- LOCATION: Thetford, Norfolk
- PROJECT DURATION:  
September 2017 - July 2018
- PROJECT VALUE: £1.2m

Having worked for Baxter Health Care for over 10 years, carrying out repeat business on electrical installations, lighting upgrades, CCTV and an extensive Door Access System, we were delighted to be granted the electrical tender for the sites redevelopment project.

Baxter International are upgrading the existing biopharmaceutical facility which comprises of the following:

- Manufacturing CNC Areas
- Manufacturing Cleanrooms
- Manufacturing Packing Areas
- Clean Room Changing Areas
- Sterilising Areas
- MCC Switch Room & Plant Room

We are responsible for delivering the extensive electrical package which consists of:

- Bespoke MCC Panel
- Large Containment Systems
- LV Cabling & Distribution
- LED Lighting & Controls
- Specialist Control Systems Incorporating VSD's





# comprehensive services

We are specialists in the following:

- COMMERCIAL & INDUSTRIAL INSTALLATIONS
- LARGE POWER INSTALLATIONS
- BUILDING MANAGEMENT SYSTEMS
- POWER FACTOR CORRECTION
- CONTROL PANELS
- DATA DESIGN & INFRASTRUCTURE
- LIGHTING DESIGN
- AIR CONDITIONING
- PORTA CABIN & TEMPORARY ACCOMMODATION
- ENERGY MANAGEMENT SYSTEMS
- TESTING & INSPECTION
- ACCESS CONTROL
- CCTV
- FIRE ALARM & ASD SYSTEMS







# Rollins

ELECTRICAL  
MECHANICAL

**ROLLINS ELECTRICAL**  
THE CURRENT BUILDINGS,  
JARVIS GATE, SUTTON ST. JAMES,  
SPALDING, LINCOLNSHIRE PE12 0ER  
ENGLAND

**Tel:** 01945 440 779  
**Fax:** 01945 440 614  
**Email:** [sales@rollinselectrical.com](mailto:sales@rollinselectrical.com)

[www.rollinselectrical.com](http://www.rollinselectrical.com)

